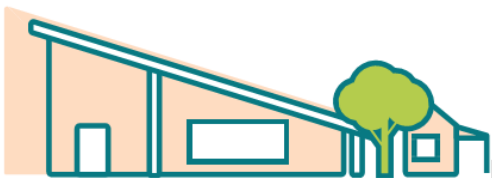


PIPALYATJARA



ANANGU SCHOOL

KALKA



2024 annual report to the Community

Pipalyatjara Anangu School and Pipalyatjara Anangu Preschool

Pipalyatjara Anangu School number: 1526

Pipalyatjara Anangu Preschool number: 1790

Partnership: Anangu Lands



School principal:

Fraser Marshall

A handwritten signature in black ink that reads "FM".

Date of endorsement:

04/02/2025



Government
of South Australia
Department for Education

Context Statement

Pipalyatjara Anangu School caters for students from R-12. At the time of this report, the enrolment in 2024 is 67. Pipalyatjara Anangu School is classified as Category 1 on the Department for Education Index of Educational Disadvantage. At the time of this report, the school population includes 100% Aboriginal students, 9% children/young people in care. Further information about the school is available on the school's website (including its context statement), as well as the My School website.

Information about Pipalyatjara Anangu Preschool is available on the centres website, as well as the Australian Children's Education and Care Quality Authority (ACECQA) website.

Data Source: Department for Education data holdings from Mid census captured in AUGUST 2024.

Governing Council Report

Pipalyatjara Anangu School Governing Council is proud of the work the Teachers and Anangu Educators are doing to develop the First Language and Cultural Knowledge of the students. This has included the creation of the "Patilpa Classroom" – a space for Anangu Teachers to deliver first language lessons which are timetabled daily. The Governing Council is supportive of the school continuing to resource and develop the On Country Learning program – Two-Way Science. The Two-Way Science program, alongside the First Language program, have empowered Anangu Educators as teachers and leaders within the school. Staff have been using the Pitjantjatjara Yankunytjatjara Phonics Assessment tool (PYPA) to track the growth of students reading in Pitjantjatjara, with many students demonstrating exceptional growth.

The students were involved in many extra-curricular activities throughout 2024. These highlights included, Ernabella Dance, PYEC Football, Yulara Outback Marathon, Trade Training Centre and Voyages experiences at Uluru.

The highlight of 2024 for many students and families was the Term 4 attendance school camp to Queensland. 28 Students achieved the attendance goal throughout Semester two, and had a wonderful learning experience in Queensland, this included visits to Australia Zoo, Sealife, Gold Coast Suns Football Club, Dreamworld, Daintree Rainforest and the Great Barrier Reef.

Emily Buddy – On behalf of the Pipalyatjara Anangu School Governing Council.

Performance Summary

NAPLAN Proficiency

In 2023 the Australian Curriculum, Assessment and Reporting Authority (ACARA) - a Commonwealth Independent statutory authority - announced changes to NAPLAN performance reporting. The new approach replaces the previous numerical NAPLAN bands and the national minimum standard.

NAPLAN results are not shown where sites have enrolment of less than 6 students in the applicable NAPLAN year levels.

Year 12 Students undertaking Vocational or Trade Training (VET)

	2022	2023	2024
Percentage of Year 12 students undertaking Vocational Training or Trade Training			
Percentage of Year 12 students attaining a Year 12 certificate or equivalent VET qualification			

Data Source: School supplied data

Preschool Attendance

	Term 1	Term 2	Term 3	Term 4
2021 centre	28.6%	30%	32.9%	36.5%
2022 centre	3.7%	50.9%	31.8%	55%
2023 centre	18.8%	22.5%	48%	12.9%
2024 centre	19.8%		43.2%	

Based on attendances recorded in the two-week reference period each term. Data for eligible enrolments as described in the department's Enrolment policy. Attendance rates may differ to previous reporting with the transfer from calculations based on deemed attendance to actual attendance using booked hours divided by attended hours. Data Source: Department for Education Attendance Data, Semester 1 Report 2024. A blank cell indicates there were no students enrolled.

School Attendance

Year Level	2022	2023	2024
Reception	45.5%	64.0%	47.2%
Year 01	43.4%	67.1%	61.7%
Year 02	54.4%	53.8%	46.6%
Year 03	67.7%	57.2%	68.8%
Year 04	54.2%	63.8%	40.1%
Year 05	51.1%	70.3%	55.3%
Year 06	53.6%	56.6%	50.9%
Year 07	59.5%	39.3%	41.8%
Year 08	66.0%	75.5%	13.6%
Year 09	65.0%	35.0%	23.7%
Year 10	49.1%	36.1%	12.5%
Year 11	17.0%	18.1%	8.6%
Year 12	54.3%	100.0%	16.1%
Total	54.0%	54.9%	40.7%

Data Source: Department for Education Attendance Data, Semester 1 Report 2024. A blank cell indicates there were no students enrolled. 'Primary Other' includes students enrolled in specialised education options. 'Secondary Other' includes students who have already spent a year at Year 12 and elected to undertake further study at Year 12.

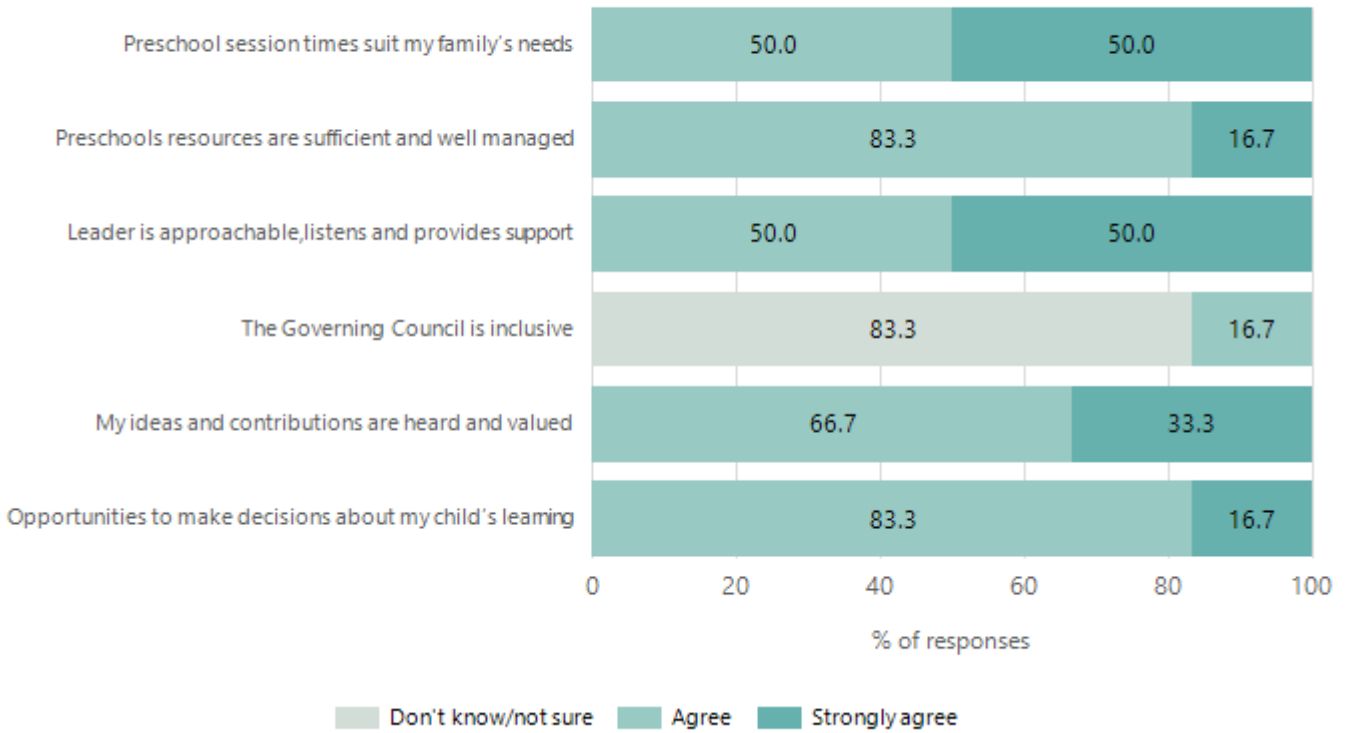
Attendance Comment

In South Australia, preschool attendance is not compulsory, but it is strongly encouraged. Preschool gives children the best opportunity to develop skills, which prepare them for school. These benefits include establishing positive routines and habits, friendships and connections as well as developing communication, problem-solving and creative skills. All children are entitled to access a preschool program over 4 terms the year before they start school.

In South Australia, all children and young people must be in school from 6 years to 16 years old. They must attend a government or non-government school full time. From age 16 to 17 however, young people must attend school or an approved learning program (such as an apprenticeship, traineeship, accredited course or university). Schools and parents must encourage and support students to come to school every day. Parents and caregivers must make sure their child is enrolled in a school, and attends school all day and everyday it is open, unless a child is sick or has an approved exemption. Teachers and leaders actively follow up when a student misses school, including recording all absences and non-attendance. All schools in South Australia have local attendance procedures governed under the Education and Children's Services Regulations 2020.

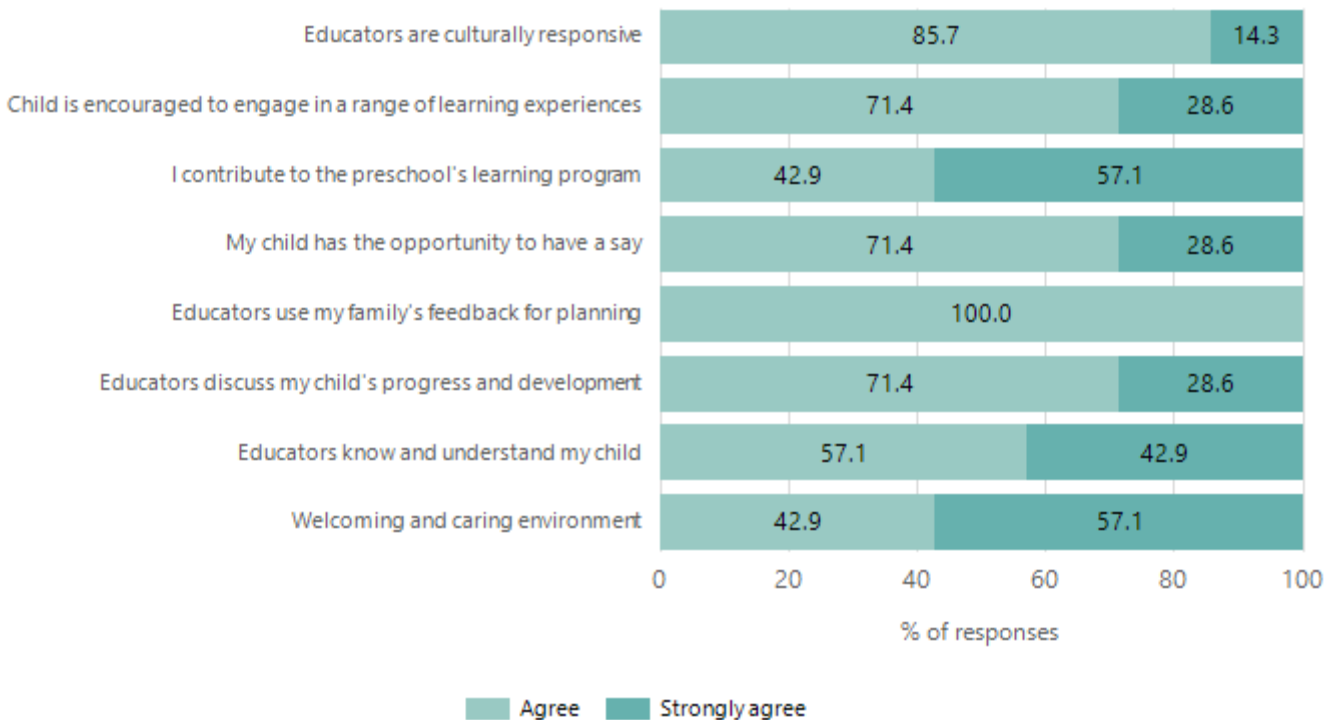
Preschool Family Opinion Survey

Governance, Leadership and Management



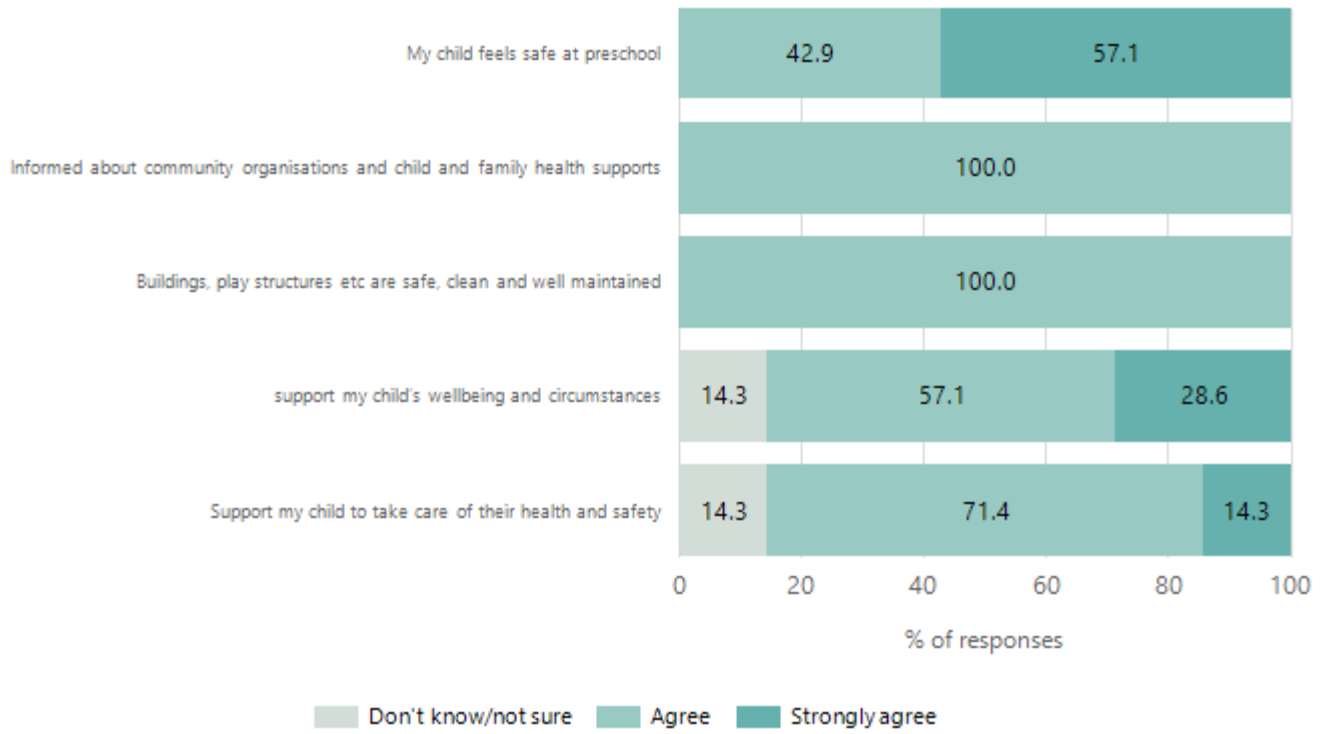
Data Source: 2024 Department for Education Preschool Family Opinions Survey, Term 3 2024.

Quality of Teaching and Learning



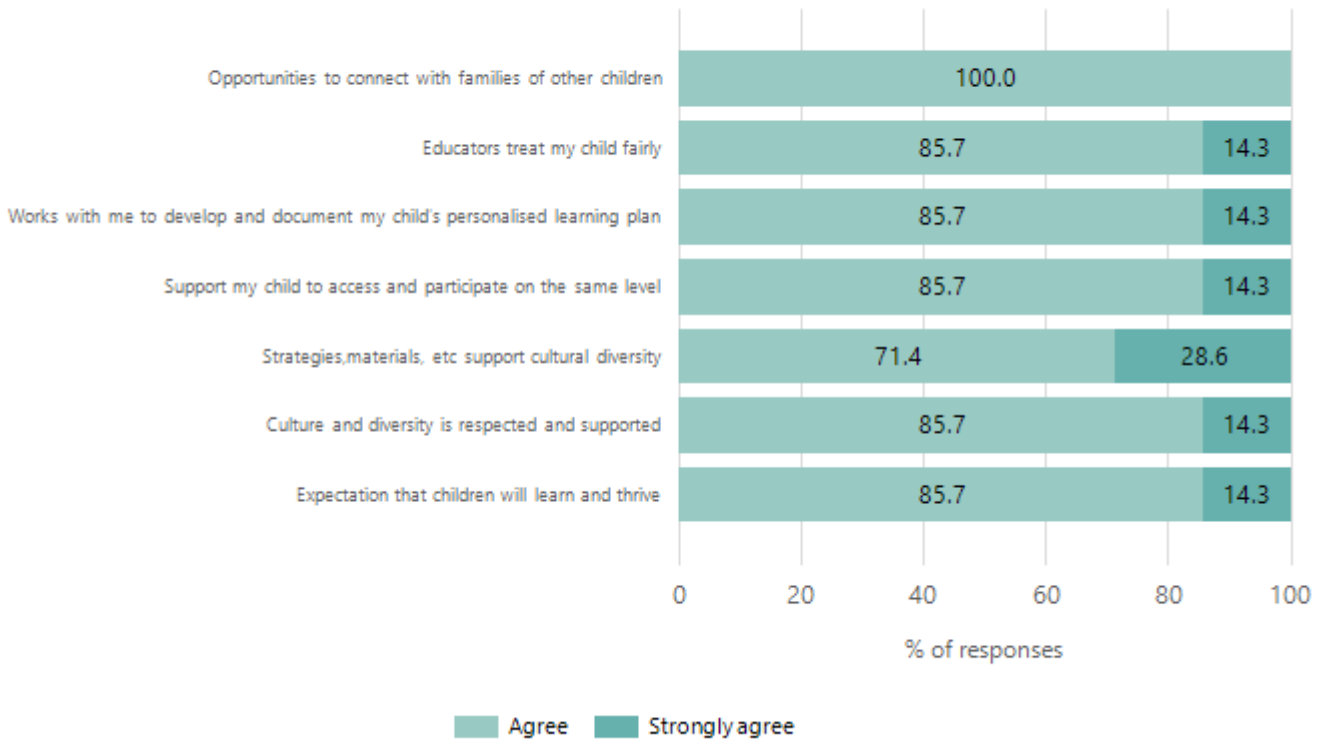
Data Source: 2024 Department for Education Preschool Family Opinions Survey, Term 3 2024.

Safety, Health and Wellbeing



Data Source: 2024 Department for Education Preschool Family Opinions Survey, Term 3 2024.

Support and Inclusion



Data Source: 2024 Department for Education Preschool Family Opinions Survey, Term 3 2024.

Destination Schools

Feeder Schools (Site number - Name)	2022	2023	2024
1526 - Pipalyatjara Anangu School	72.7%	100.0%	50.0%
9999 - Unknown	27.3%		50.0%

Note: The data is collected in term 3. It does not reflect actual schools enrolled in by existing preschool children. A blank cell indicates there was no data for students enrolled.

Data Source: Department for Education Destination Data Report, 2024.

Intended Destination

Leave Reason	Number	%
IS - INTERSTATE	8	35.0%
NT - LEFT SA FOR NT	2	9.0%
TG - TRANSFERRED TO SA GOVERNMENT SCHOOL	1	4.0%
U - UNKNOWN	5	22.0%
WA - LEFT SA FOR WA	7	30.0%

Data Source: Department for Education Destination Data Report, 2024. Data extract term 3 2024. Data shows recorded destinations for students that left the school in the previous year. Data is uploaded by schools in term 3 and may not reflect final or total figures at time of report creation.

Highest Qualifications held by the teaching workforce and workforce composition

All teachers at this school are qualified and registered with the SA Teachers Registration Board.

Qualification Level	Number of Qualifications
Bachelor's degrees or Diplomas	3
Postgraduate Qualifications	7

Data Source: Data extracted from Mandatory Workforce Information Collections as on the last pay date of June 2024. As self-reported by staff in the system.

Please note: Data includes staff who are Actively employed and on extended paid leave. Please note only the highest qualification of the Teaching staff is reported. Excludes any number of other certifications earned.

Workforce composition including indigenous staff

	Teaching Staff		Non-Teaching Staff	
	Indigenous	Non-Indigenous	Indigenous	Non-Indigenous
Full-Time Equivalents	0.0	10.0	6.8	1.9
Persons	0.0	10.0	16.0	2.0

Data Source: Data extracted from Mandatory Workforce Information Collection as on the last pay date of June 2024.

Please note: Data includes staff who are actively employed and on extended paid leave. "Indigenous category" is self-reported by staff in the system.

Financial Statement

Funding Source	Amount
Grants: State	\$2,098,321.62
Grants: Commonwealth	N/A
Parent Contributions	N/A
Fund Raising	N/A
Other	N/A

Data Source: School supplied data.